

Group 1

From the Documentation Center to the Zeppelin Grandstand

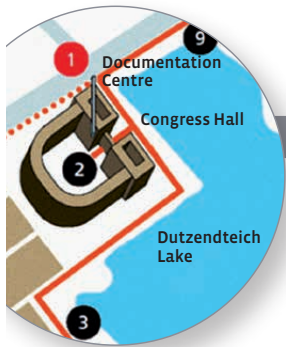
Exploring the former Nazi Party Rally Grounds

dokumentationszentrum
reichsparteitagsgelände
museen der stadt nürnberg



Exploring the former Nazi Party Rally Grounds

Welcome to the former Nazi Party Rally Grounds. From 1933 to 1938, the Nazi Party held its so-called rallies, annual propaganda shows staged by the Nazis, at this site. Information panels at the various venues around the grounds visualise the history of the site using historical pictures. The round tour begins at the Congress Hall and leads across the Great Road to the Zeppelin Grandstand. You can now explore the history of the site with the map and questions to guide you.



Station 1: Congress Hall interior/exterior

The tour begins at the Congress Hall. Information panels no.1 and/or 2 provide details of the building's construction history and intended function.

Answer the following questions:

1. What ancient building in Rome does the exterior of the Congress Hall resemble? List one or more reasons why ancient models were selected as the inspiration for buildings in the Nazi era?



2. What does the planned interior of the Congress Hall look like? What was this hall going to be used for and how many people was it to hold?



3. How was the Congress Hall used after 1945? What would be a good use for it in the future?





Station 2: Great Road

Walk towards the Great Road and Dutzendteich Lake to information panel no.3 and answers the questions. Remember to look at the pictures before answering the questions.

4. How were the grounds used before 1933? As of 1933, what did this large-scale Nazi construction site mean for the citizens of Nuremberg?



The Great Road consists of 60,000 granite slabs of equal size. How long do you think they are? Count how many granite slabs are laid side by side. What does that tell us about the width of the road?



6. According to Albert Speer's plans, what was the function of the Great Road?



7. Since when have fun fairs been held regularly on the grounds? What do you think of this?



Station 3: German Stadium

Continue along the military parade road towards the Messe (trade fair center)/Langwasser to information panel no. 4. The German Stadium was to be built right next to the Great Road. However, construction work did not progress beyond the laying of the foundation stone. Look at the pictures and answer the following questions:

8. How many spectators was the German Stadium to hold? What combat games did the Nazis want to stage here?



9. Why were wooden grandstands built to original scale in the Hirschbach Valley?



10. How was the Great Road used in the post-war period?



Station 4: Dutzendteich Lake

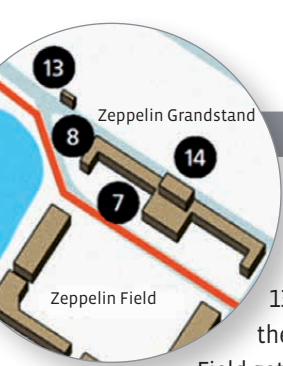
Continue walking along the lakeside. Information panel no.5 shows you how Dutzendteich Lake has changed since the fourteenth century. Look closely at the pictures and answer the questions:

11. How did Dutzendteich Lake get its name?



12. What is different about Dutzendteich Lake to before? Why was it changed?



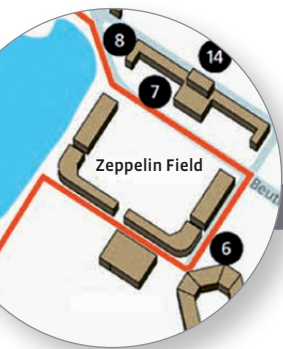


Station 5: Zeppelin Grandstand

Go on to information panel no. 7 and answer the question:

13. How did the Zeppelin Field get its name?





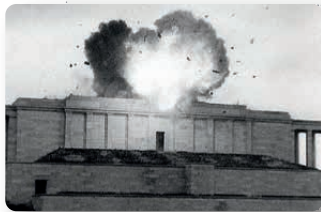
Station 6: Zeppelin Field

The Zeppelin Field was one of the most important parade grounds during the rallies. Go to information panel no. 7 and answer the following questions:

14. What events took place on the Zeppelin Field? Consider what role they played.

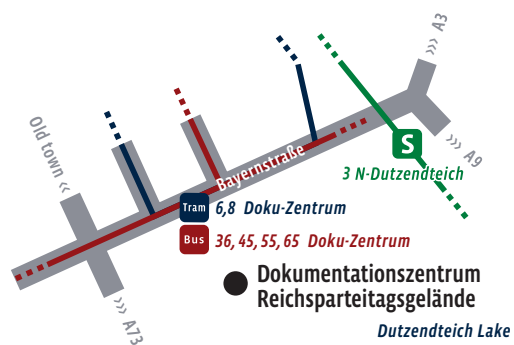


15. The Zeppelin Grandstand looks different now to what it was like in the Nazi era. Name the reasons for the change.



16. Discuss in your group whether using the site for educational purposes and leisure activities at the same time makes sense and note down the reasons for your answer.





Documentation Centre Nazi Party Rally Grounds

Nuremberg Municipal Museums
Bayernstraße 110, 90478 Nuremberg

Tel +49 911 231-7538

Fax +49 911 231-8410

dokumentationszentrum@stadt.nuernberg.de

dokumentationszentrum-nuernberg.de

Public transport

- Tram line 6, 8: Tram stop Doku-Zentrum
- Bus 36, 45, 55, 65: Bus stop Doku-Zentrum
- S-Bahn 3: Dutzendteich Bahnhof train station

Imprint

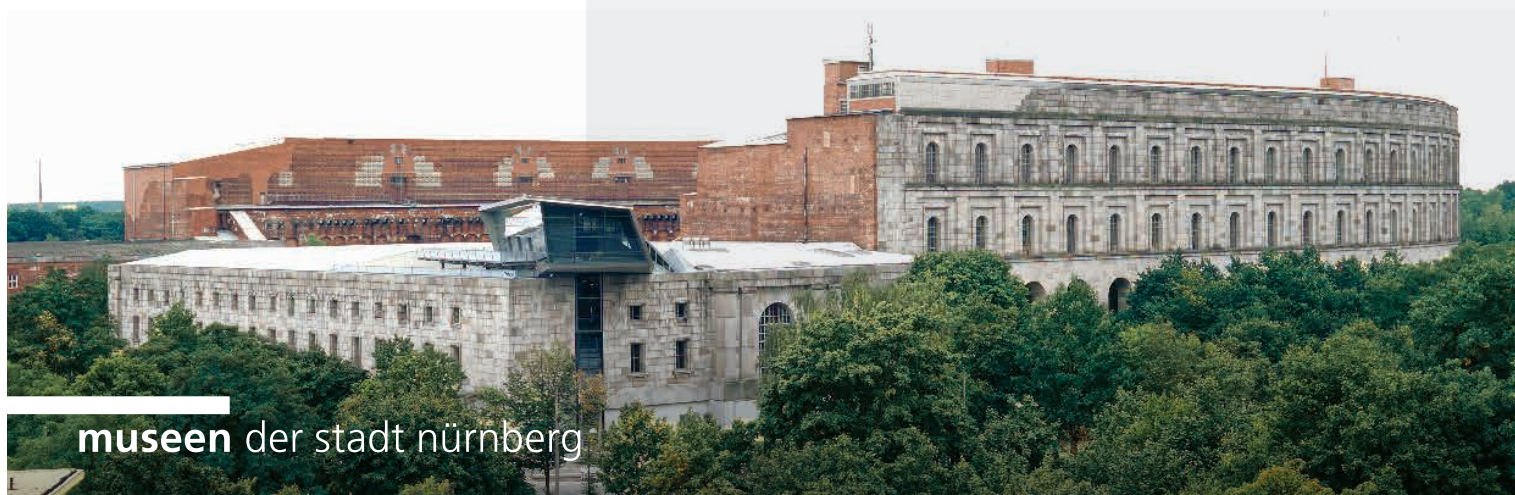
Documentation Center Nazi Party Rally Grounds

Nuremberg Municipal Museums

Illustrations: Documentation Center Nazi Party Rally Grounds,

Stephan Minx, National Archives Washington, College Park,

MD, USA, City of Nuremberg, Nuremberg City Archives



museen der stadt nürnberg